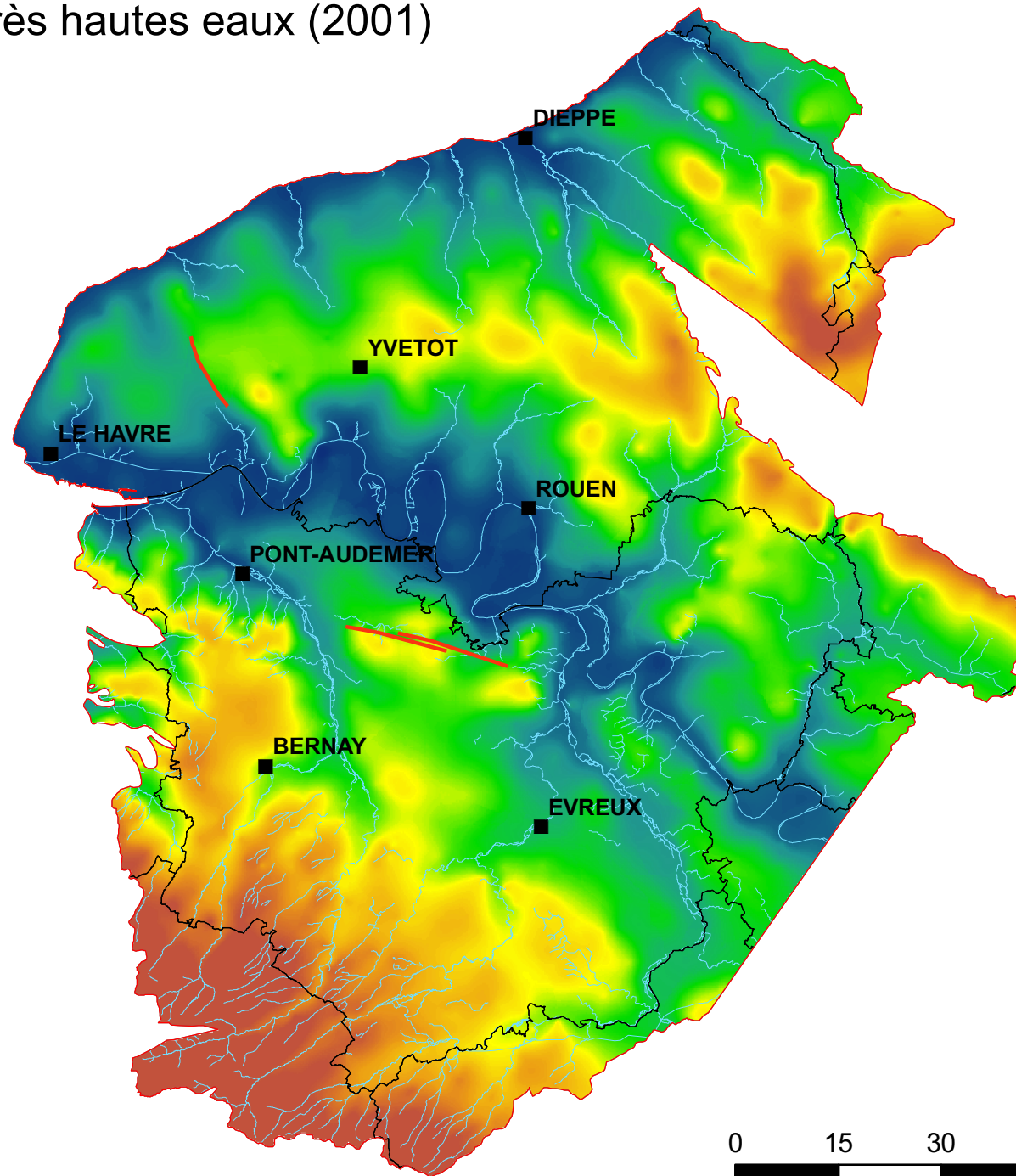
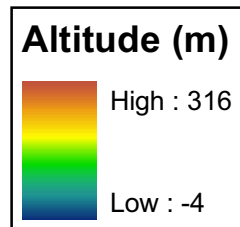
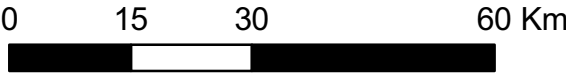
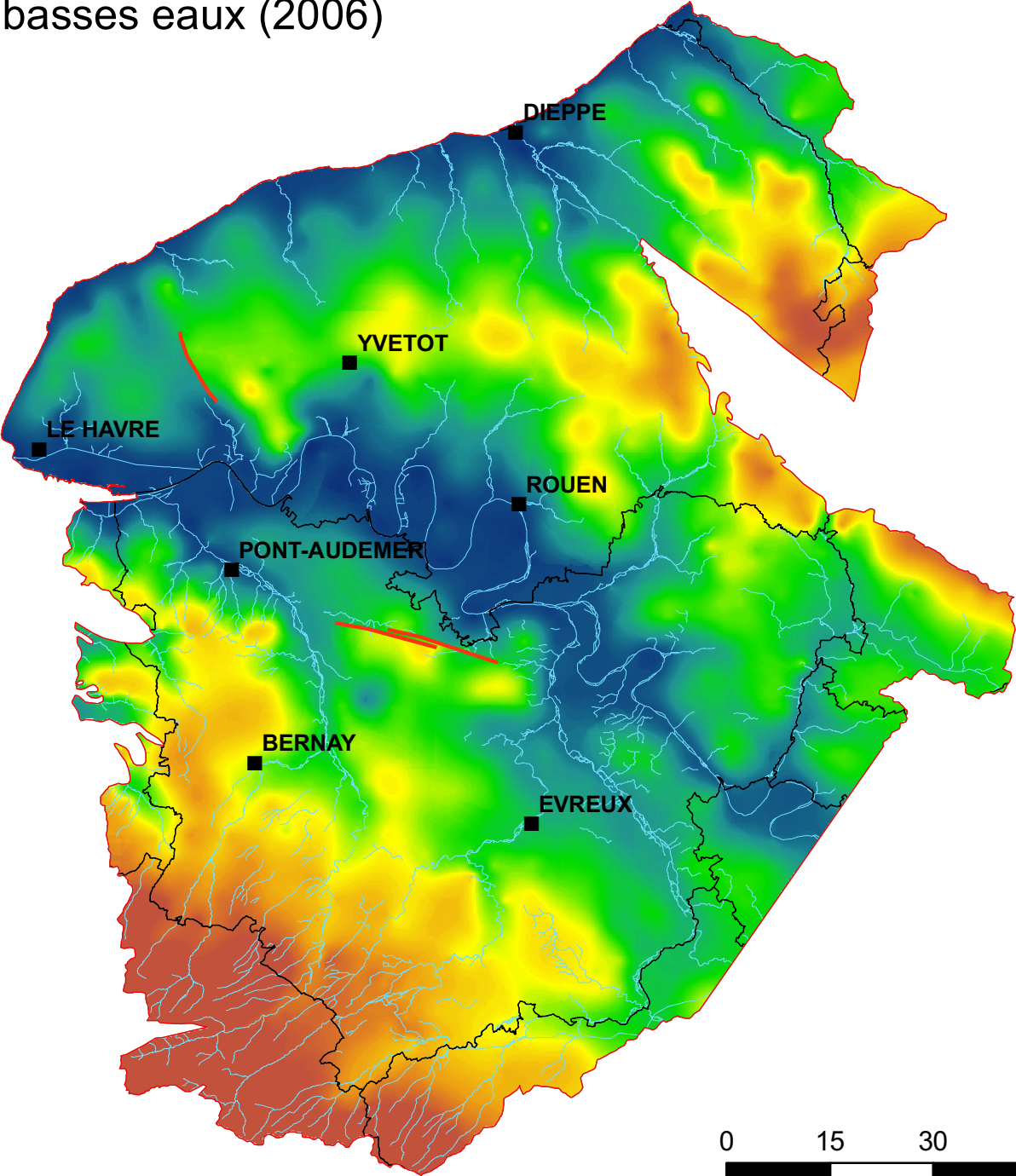
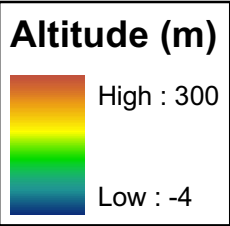


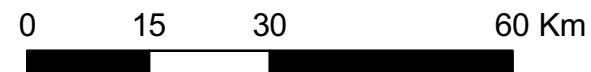
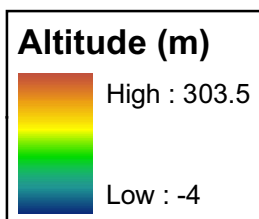
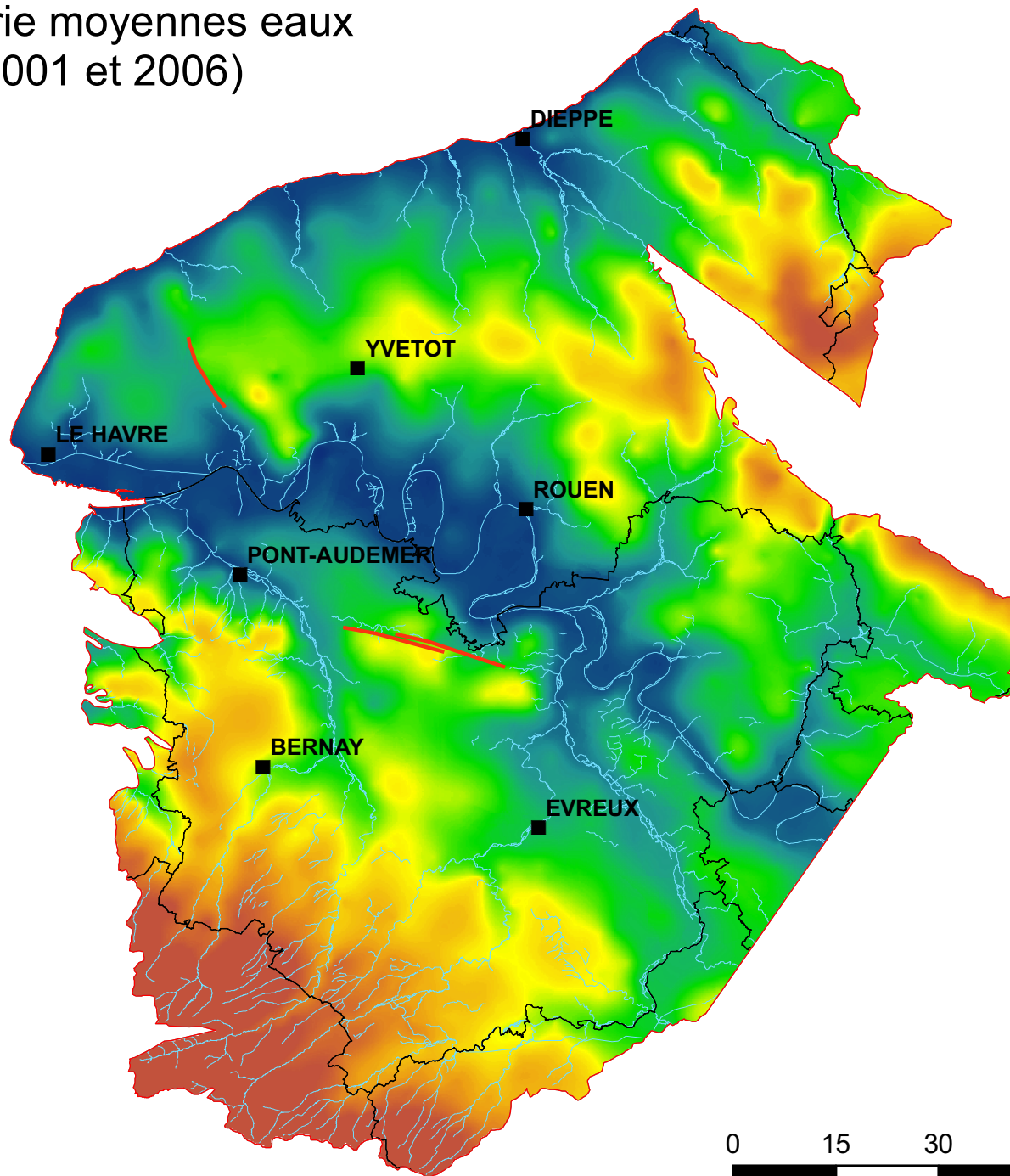
# Altitude de la piézométrie très hautes eaux (2001)



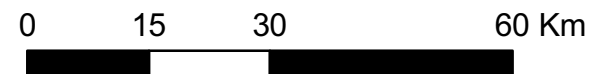
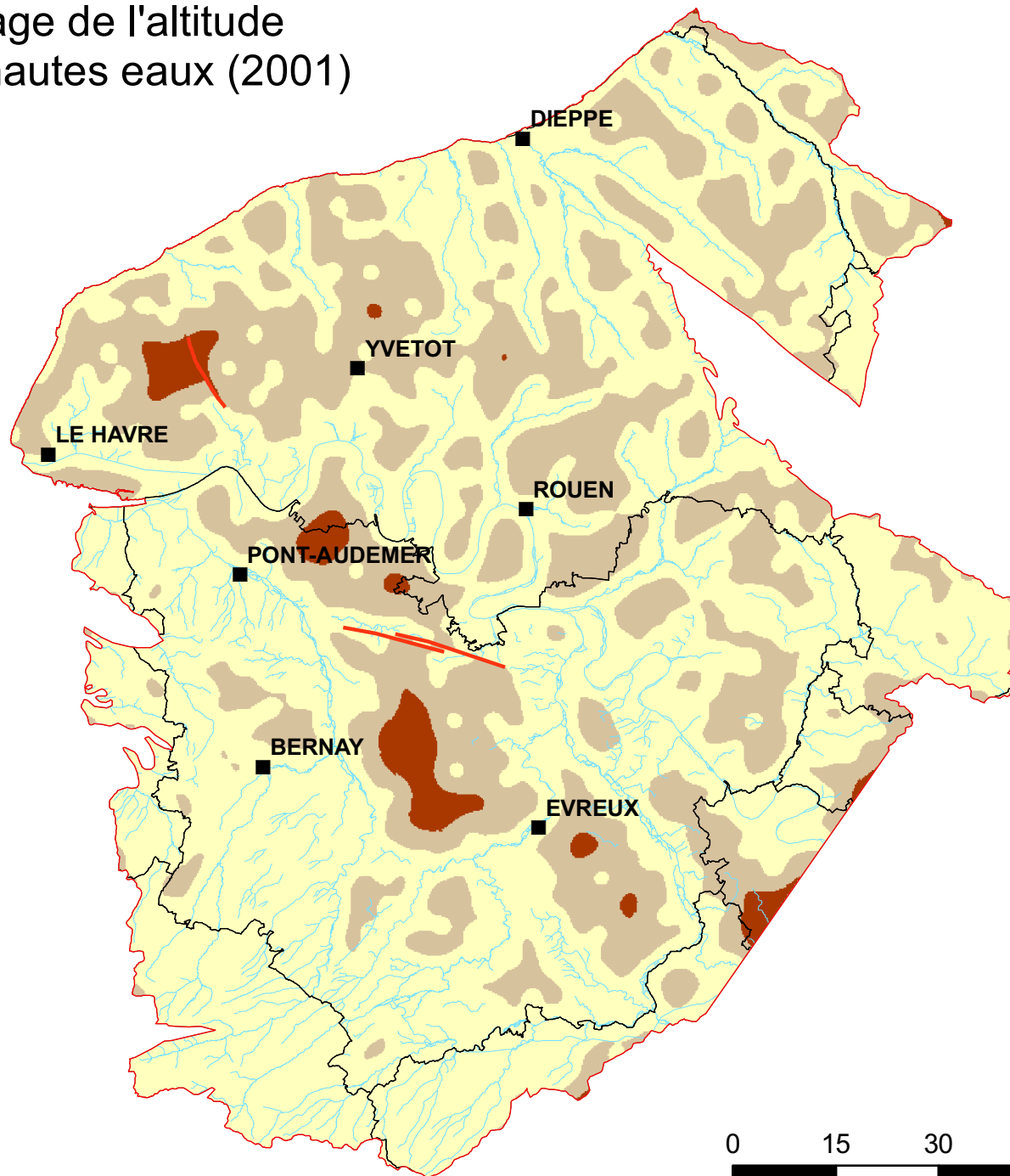
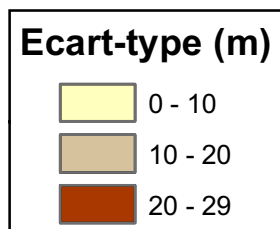
Altitude de la piézométrie basses eaux (2006)



# Altitude de la piézométrie moyennes eaux (moyenne entre 2001 et 2006)

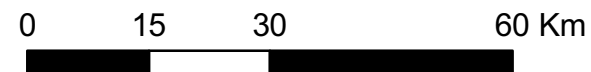
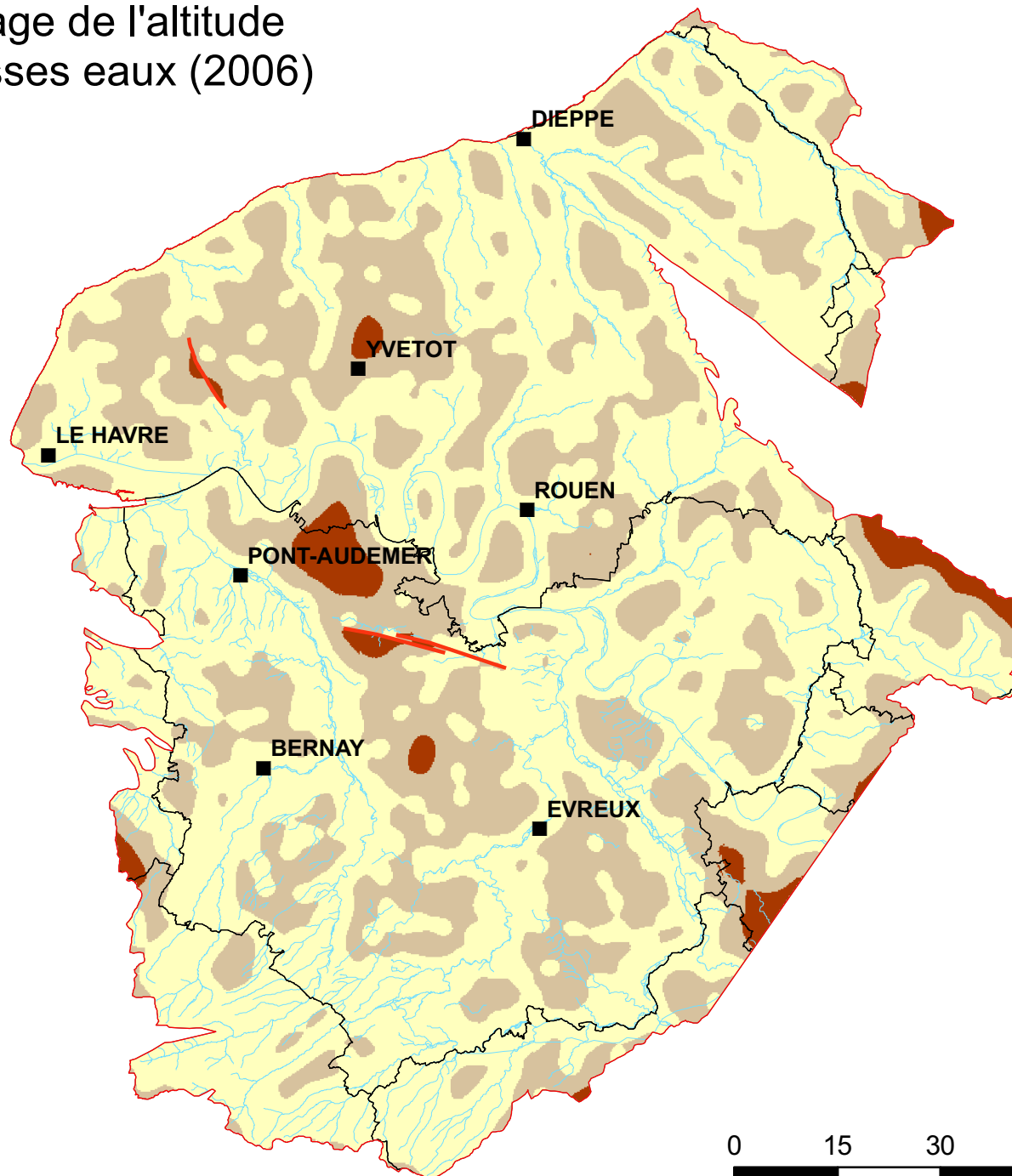
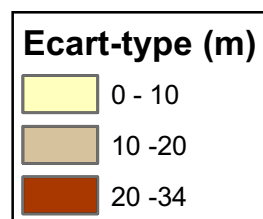


# Ecart-type du krigeage de l'altitude de la piézométrie très hautes eaux (2001)

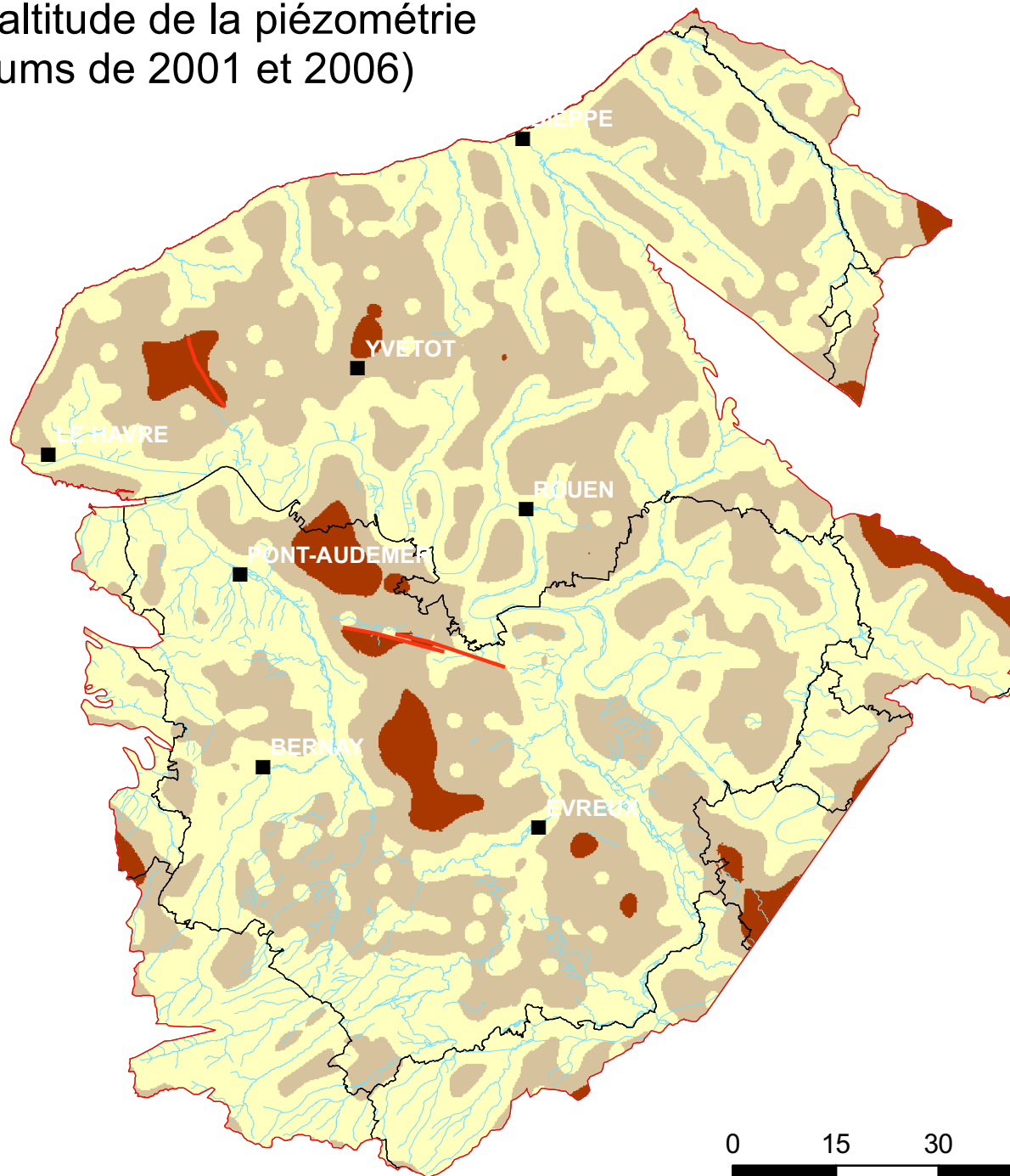
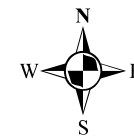




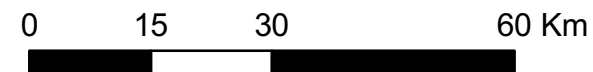
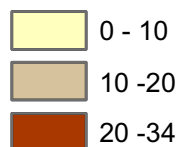
# Ecart-type de krigeage de l'altitude de la piézométrie basses eaux (2006)



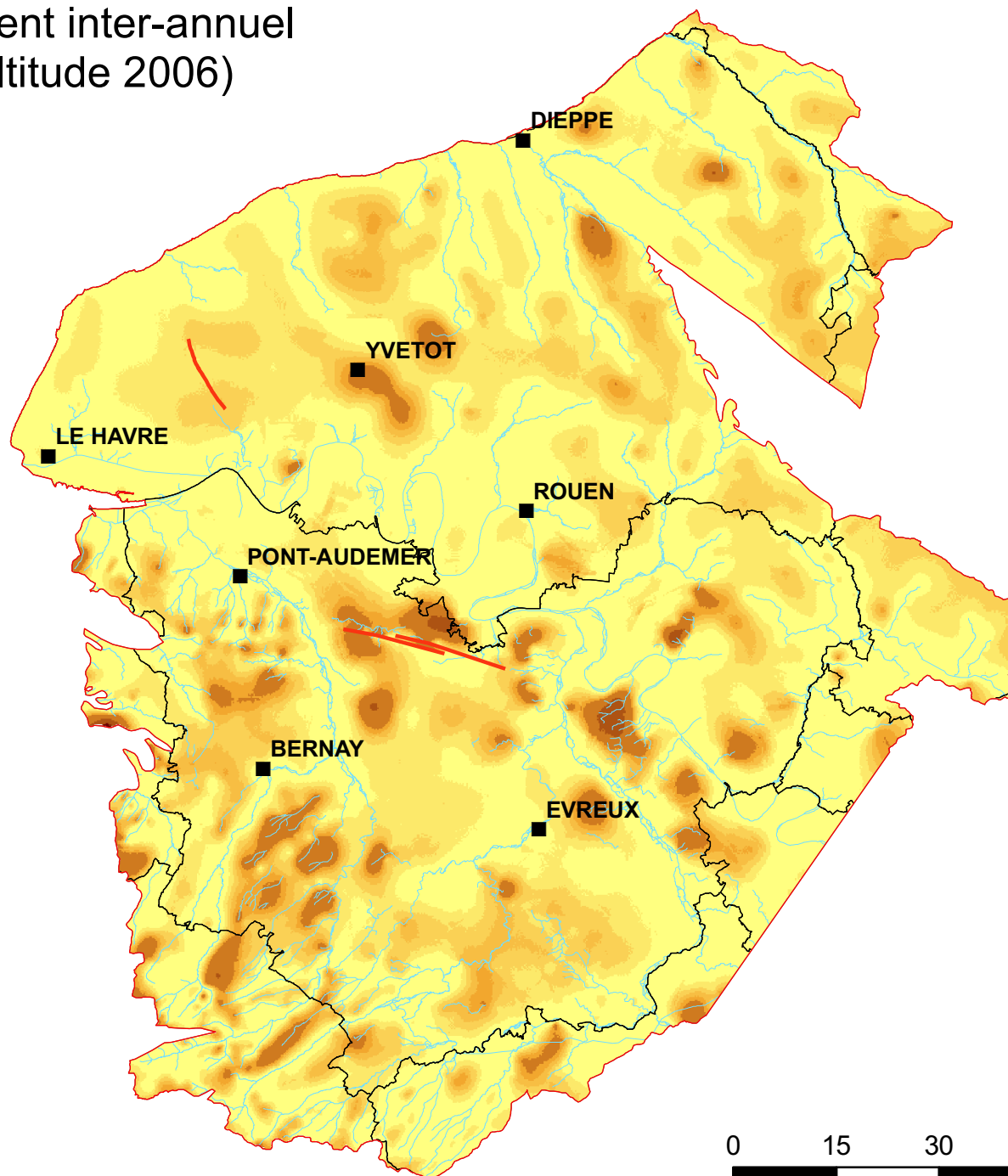
# Ecart-type de krigeage de l'altitude de la piézométrie moyennes eaux (maximums de 2001 et 2006)



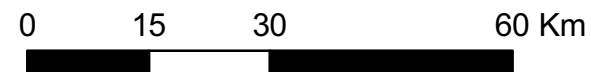
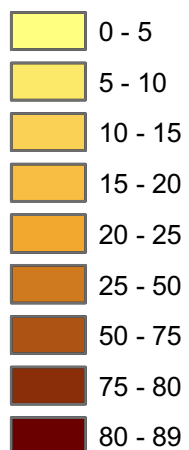
## Ecart-type (m)



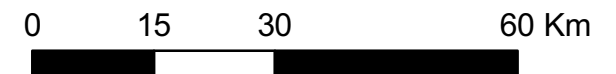
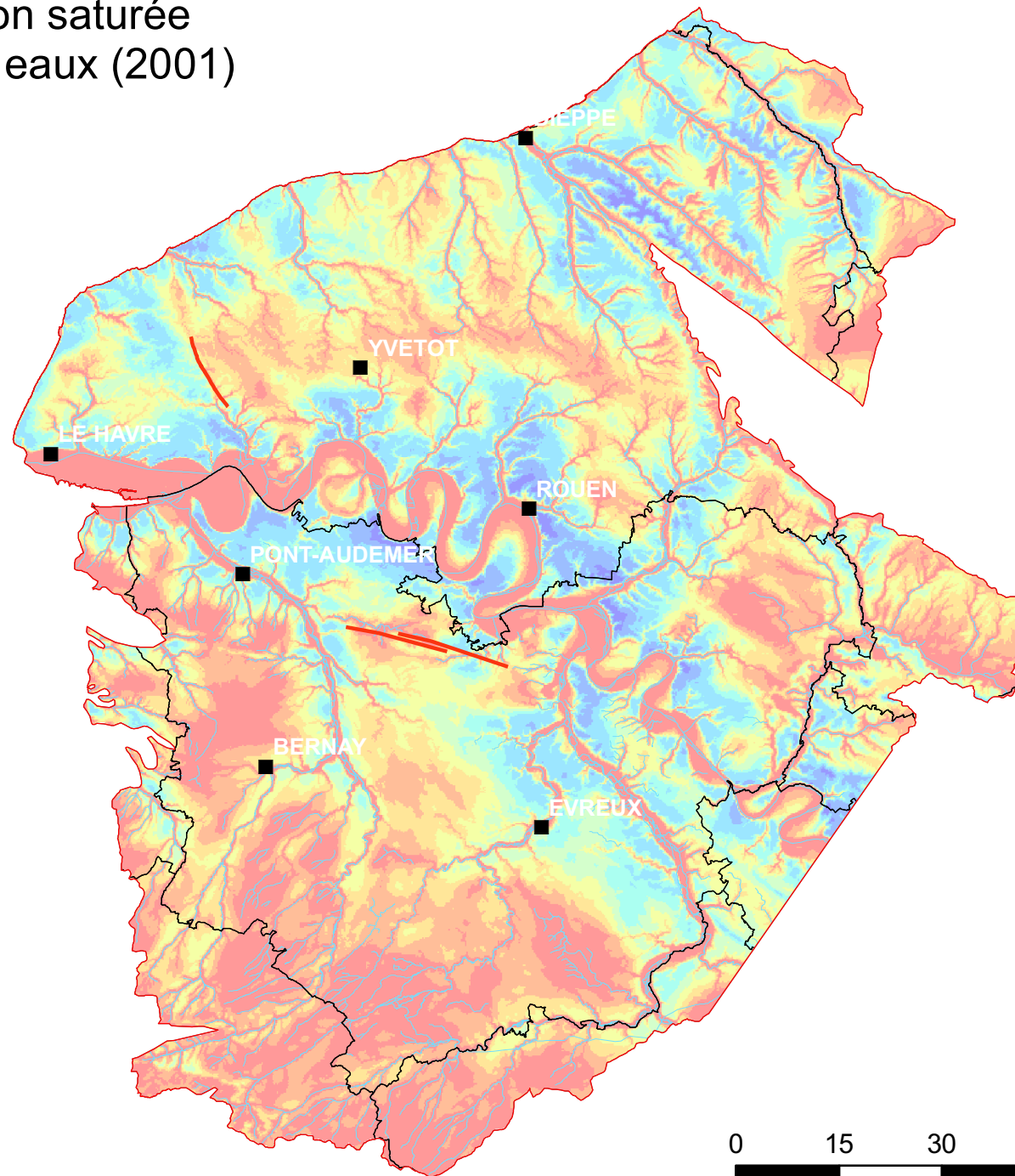
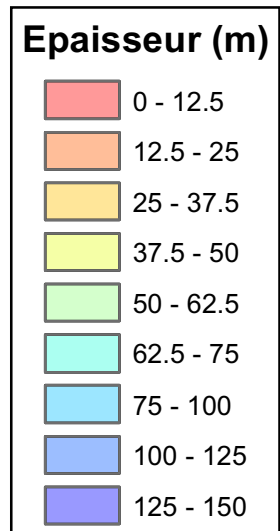
# Epaisseur du battement inter-annuel (altitude 2001 - altitude 2006)



## Epaisseur (m)

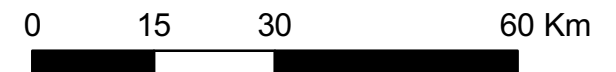
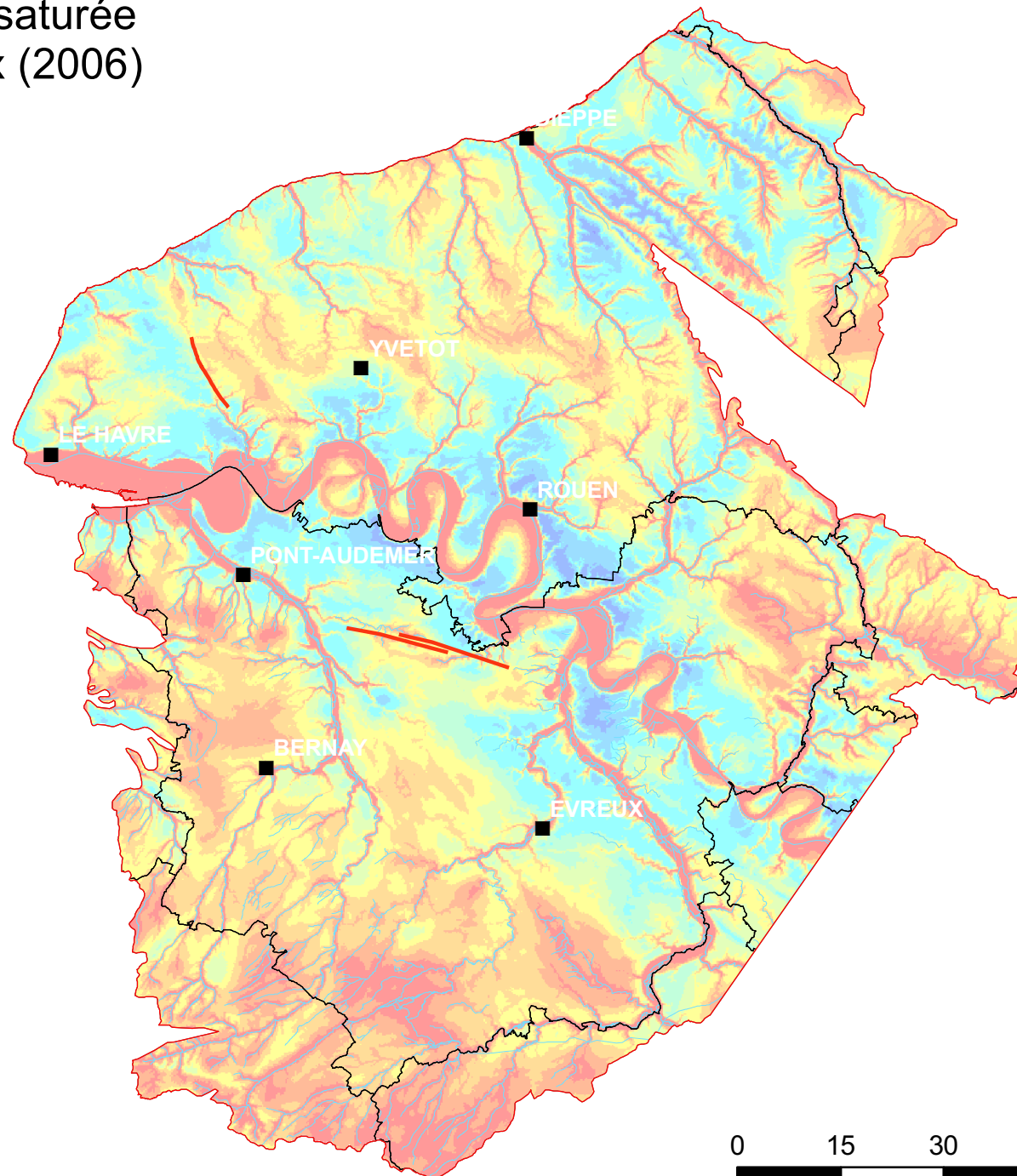
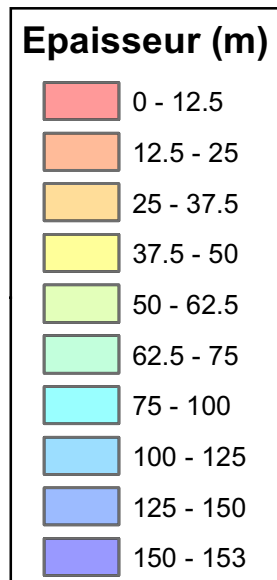


# Epaisseur de la zone non saturée en période de très hautes eaux (2001)

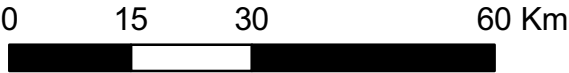
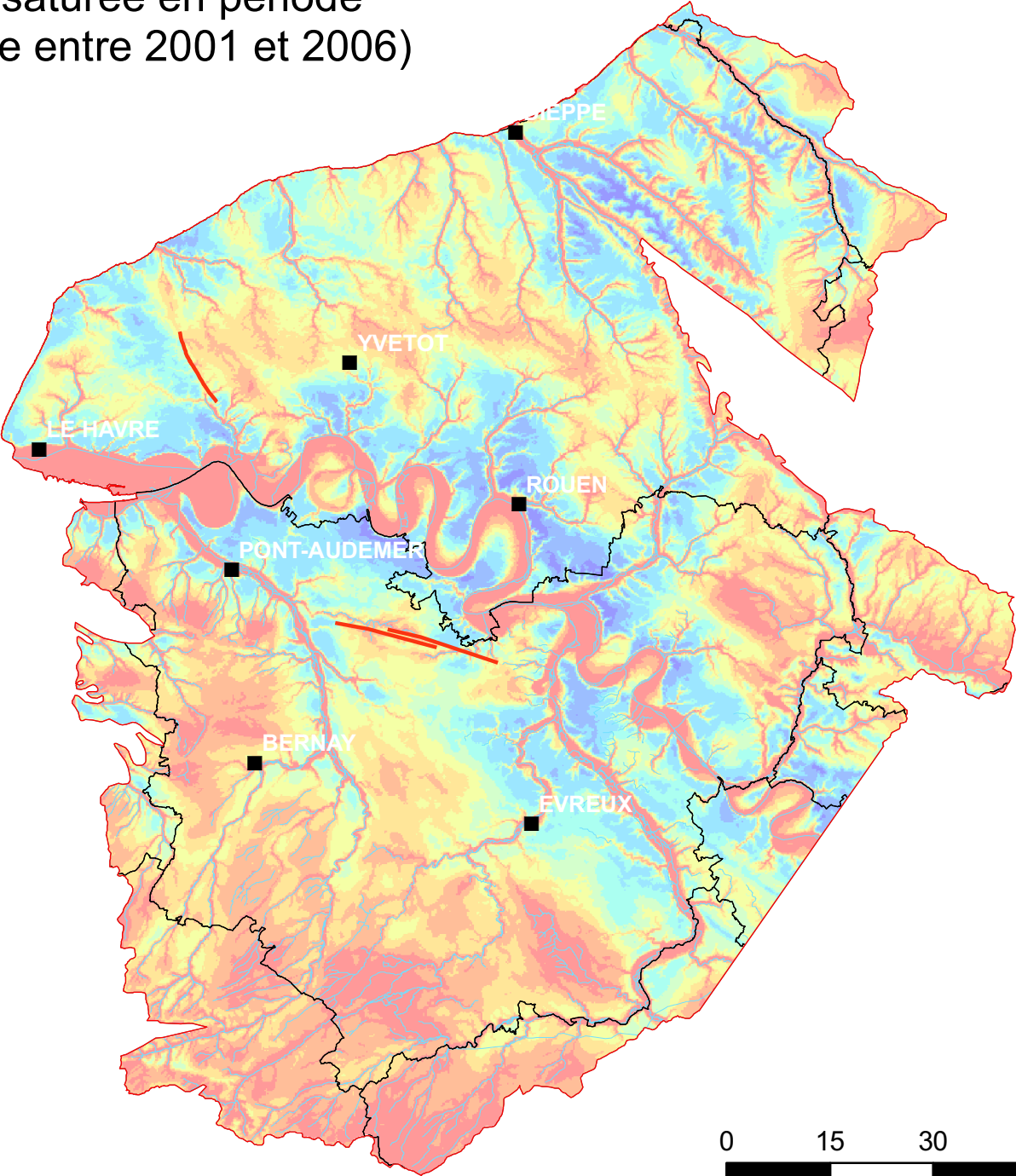
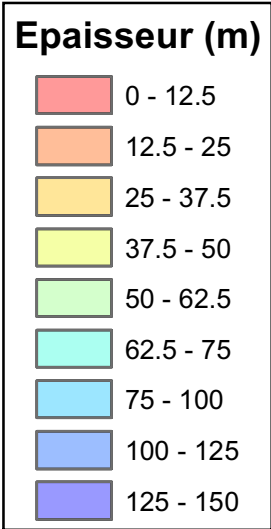




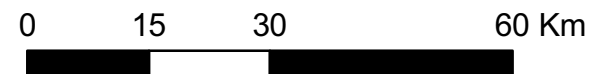
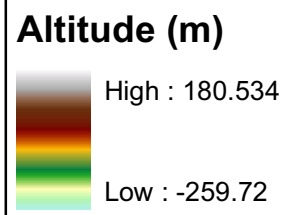
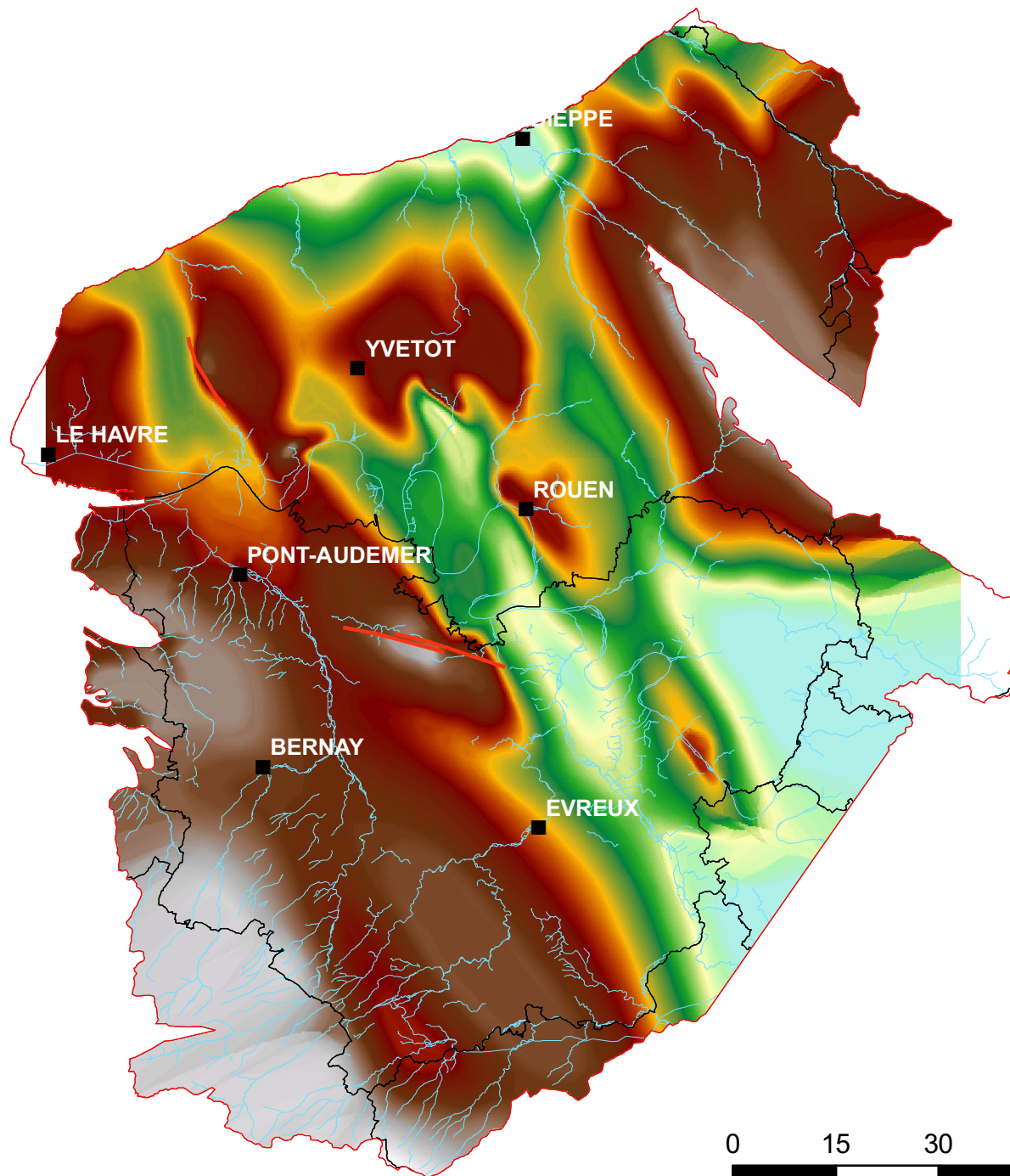
# Epaisseur de la zone non saturée en période de basses eaux (2006)



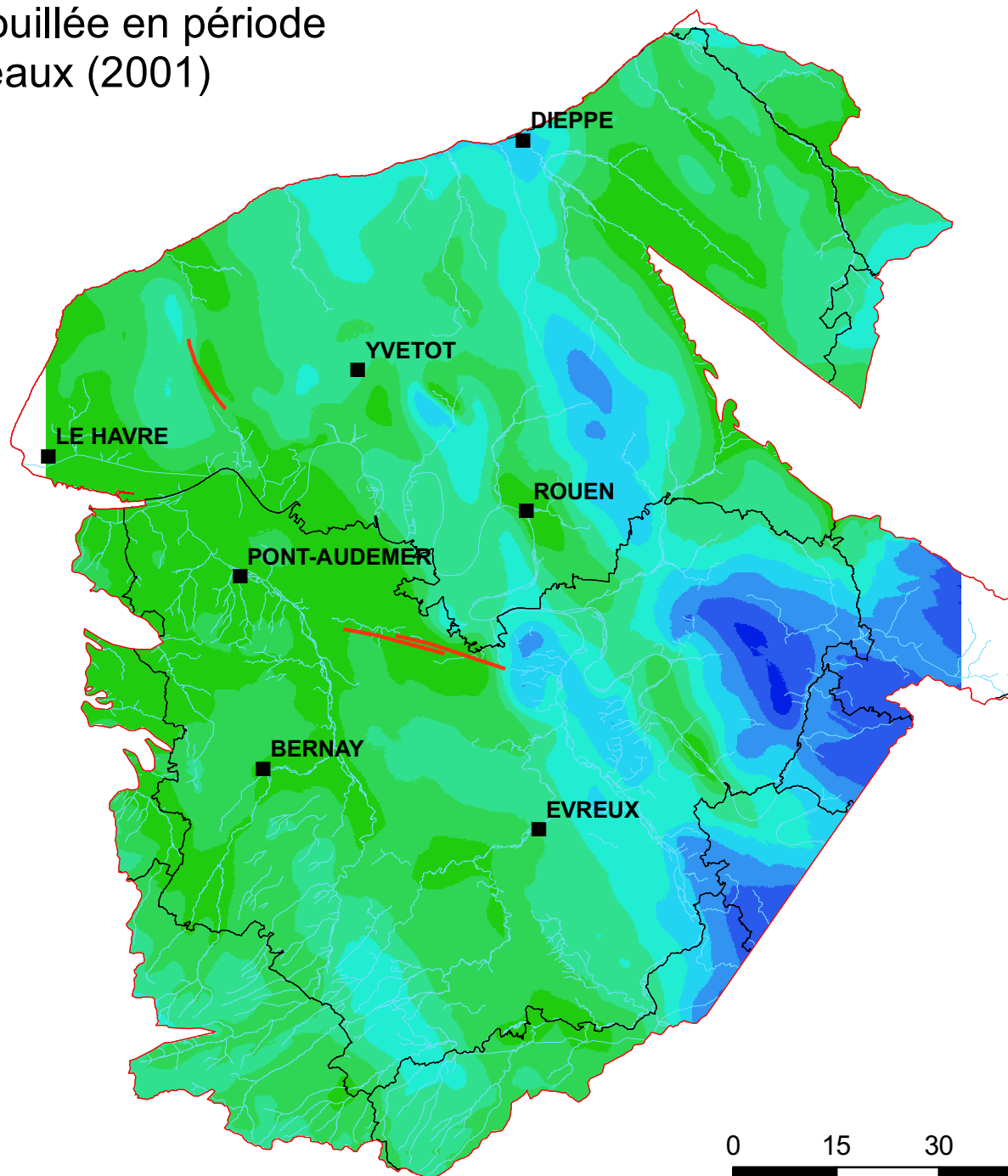
Epaisseur de la zone non saturée en période  
de moyennes eaux (moyenne entre 2001 et 2006)



# Altitude du mur de la craie

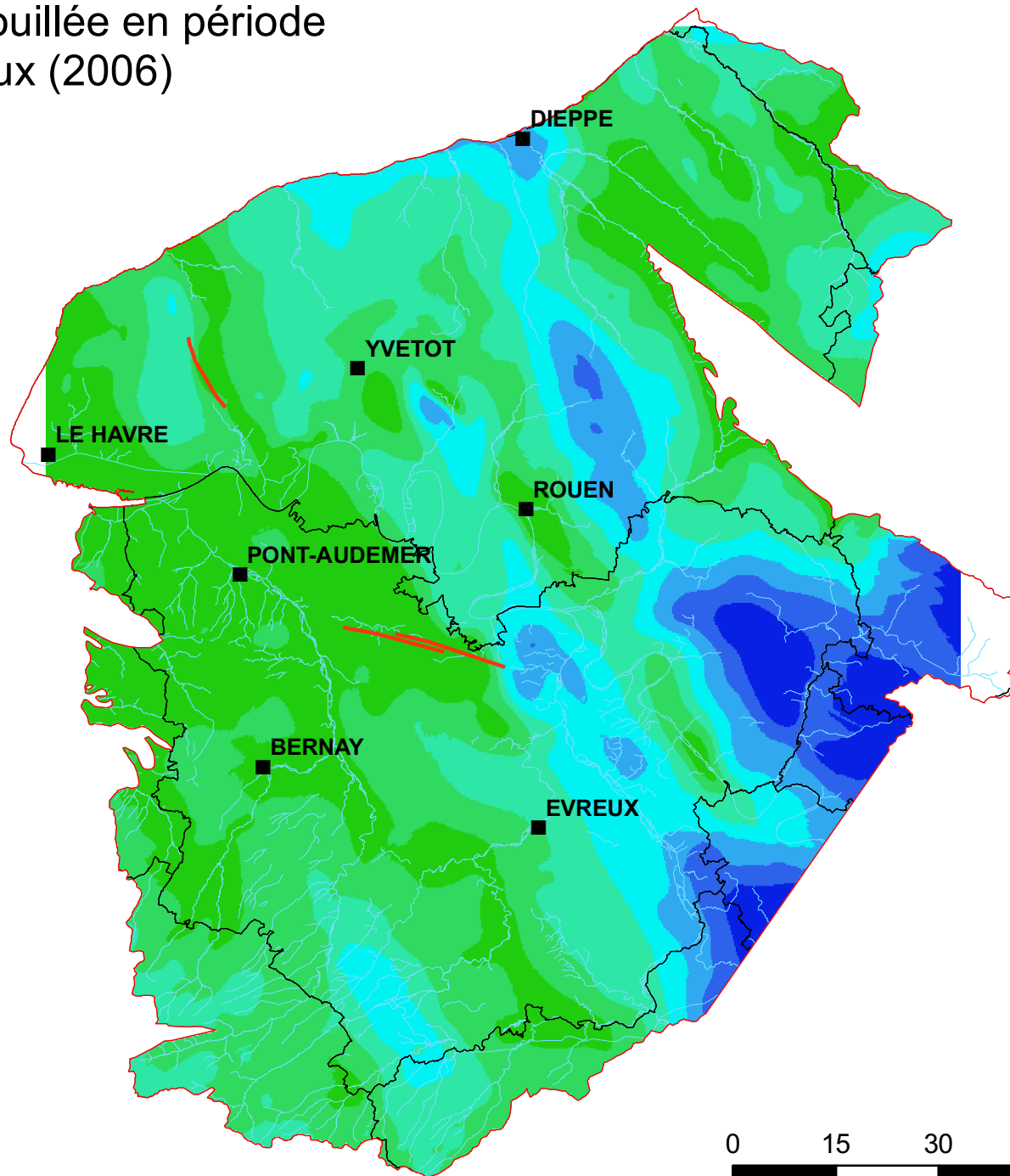


# Epaisseur de craie mouillée en période de très hautes eaux (2001)

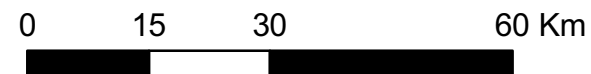




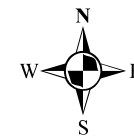
# Epaisseur de craie mouillée en période de basses eaux (2006)



## Epaisseur (m)



# Epaisseur de craie mouillée en période de moyennes eaux (moyenne entre 2001 et 2006)



## Epaisseur (m)

